



MALAYSIA PREMIER TVET INSTITUTION

PROGRAMME GUIDE

INTRODUCTION

1992

ESTABLISHED

#1

PIONEER TVET IN
MALAYSIA

In 1992, German-Malaysian Institute (GMI), a hub for advanced skills training was established. GMI provides a comprehensive and well-balanced training of practical and theoretical. The institute offers a broad-based engineering education, with opportunities for specialisation and self-directed learning and development.

GMI offers diverse training programmes and services comprising full time diploma programmes, a pre-university programme (A-Level), foundation, skills upgrading technical courses, train-the-trainers programmes, and industrial consultancy & services.

The birth of GMI was the outcome of a joint venture between the Governments of Malaysia and Germany. GMI is governed by a 10-member Board of Directors comprising representatives from both governments, plus public and industrial representatives. The institution was set up as a Company Limited by Guarantee whereby the founders are Majlis Amanah Rakyat (MARA) and the Malaysian German Chamber of Commerce and Industry (MGCC), and its implementing agencies are MARA and Deutsche Gesellschaft für Internationale Zusammenarbeit (GIZ) GmbH (formerly known as German Technical Cooperation or GTZ). GMI had its first student enrolment in 1992 and the growing number of enrolment is prevalent.



Vision

To be an internationally competitive higher learning institution delivering **advanced technical education, training and services**; empowering a skilled workforce to reach its fullest potential.

Mission

To provide cutting-edge industrial solutions in **advanced technical education and training** through innovative blended methodologies, fostering lifelong learning and responsive to global industry demands.



Industrial-Based Campus

Strategically located in Kajang, Selangor on a 75-acres land with world class facilities promoting real industrial atmosphere to help stimulate the mind of students in a student-centred learning environment; thus resulting in an established reputation for its ability to yield highly skilled, versatile and employable graduate.

GMI INDUSTRY ADVISORY COUNCIL MEMBERS

At GMI, collaboration is the catalyst for innovation. Through strong partnerships with global and local industry leaders, we create real-world experiences that empower students to excel. Together, we're shaping future-ready graduates who are primed to lead and inspire in an ever-evolving world.

Meet our Industry Advisory Council (IAC) Members:





**“At the German–Malaysian Institute GMI,
Education goes beyond facts.**

**We shape minds that think with Artistry,
and hands that work with Mastery.**

**This is the soul of Applied Science,
and all else becomes Technology.”**

22 ADVANCED TECHNOLOGY CENTRES



TESLA

**GMI - ANEVIC AUTOTRONICS
NEW ENERGY VEHICLE
CENTRE**

HYBRID SYSTEMS,
ENGINE MANAGEMENT &
COMBUSTION SYSTEM LAB



GMI - MULTIMEDIA

2D, 3D ANIMATION LAB, AUDIO &
RECORDING, EDITING &
RENDERING



SIEMENS

**GMI - MECHATRONIC
SYSTEM**

PROGRAMMABLE LOGIC
CONTROLLER



**GMI - EMERSON
PROCESS MANAGEMENT**

DISTRIBUTED CONTROL
SYSTEM (DELTA) V
TECHNOLOGY



DMG MORI

GMI - DMG MORI
CNC PRECISION
TECHNOLOGY CENTRE (CPTC)

ARBURG

**GMI - ARBURG INJECTION
MOULDING**



GMI - ZEISS
INDUSTRIAL METROLOGY

rexroth
A Bosch Company

GMI - HYDRAULICS
HYDRAULIC TECHNOLOGY



SPINNER

GMI - SPINNER
CNC PRECISION
TECHNOLOGY CENTRE (CPTC)

EH
Endress+Hauser

GMI - CALIBRATION
INSTRUMENT CALIBRATION
AND MAINTENANCE
TECHNOLOGY



22 ADVANCED TECHNOLOGY CENTRES



GMI - INDUSTRIAL ROBOTIC

COLLABORATIVE ROBOT TECHNOLOGY

GMI SOFTWARE TESTING

IOT TESTZENTRUM,
IOT SOFTWARE TESTING,
SOFTWARE APPLICATION TESTING



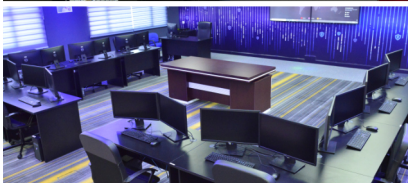
GMI - CISCO

NETWORKING



ARTIFICIAL INTELLIGENCE & INTERNET OF THINGS

INTERNET OF THINGS WITH
ARTIFICIAL INTELLIGENCE



GMI - CYBER SCHLACHTFELD CYBER SECURITY



RENEWABLE ENERGY

RENEWABLE ENERGIES,
POWER GENERATION



GMI - LVD
SHEET METAL PROCESSING
TECHNOLOGY CENTRE



GMI-BOSCH REXROTH SMART MANUFACTURING



GMI - ADVANCED SENSOR TECHNOLOGY CENTRE
ADVANCED SENSOR TECHNOLOGY



ADDITIV ZENTRUM
3D PRINTERS

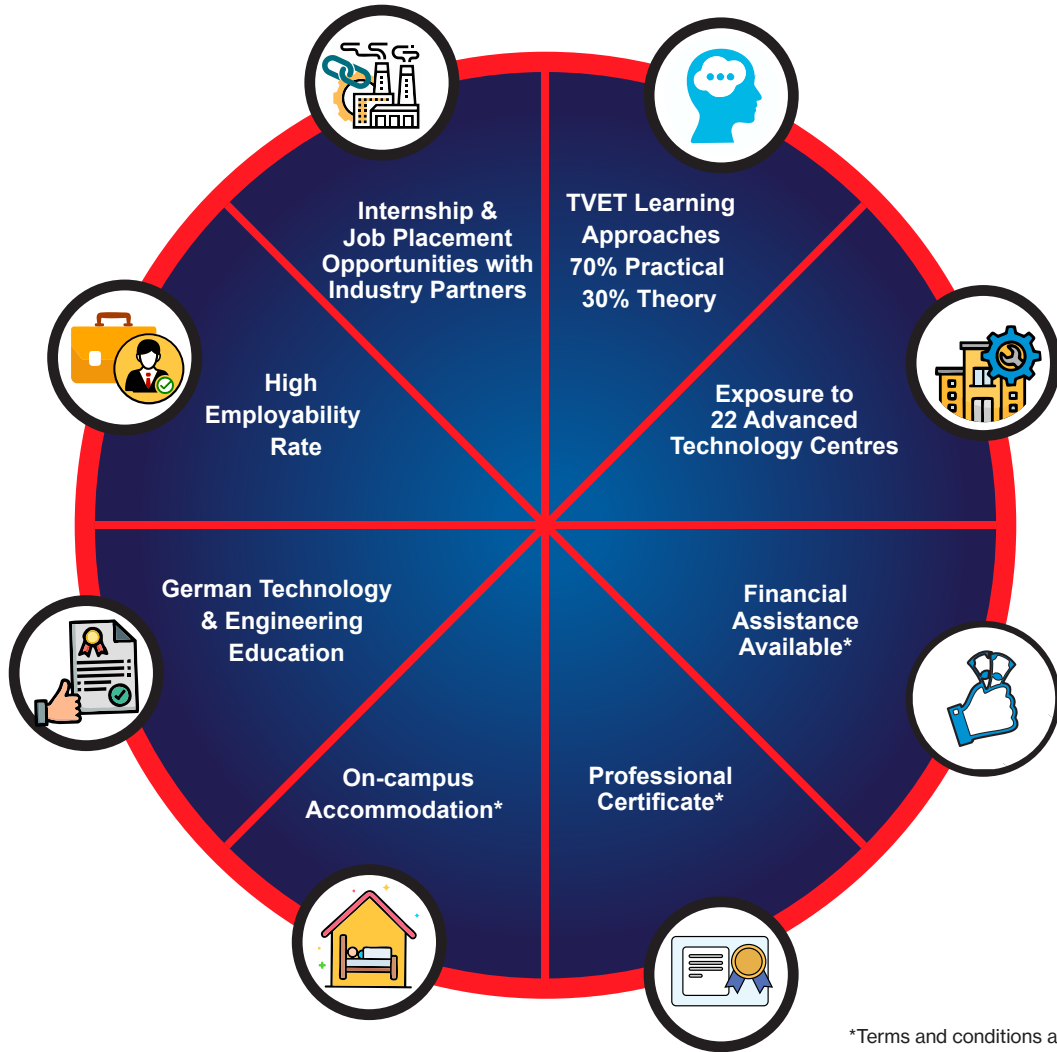


GMI - PNEUMATICS
PNEUMATICS TECHNOLOGY,
FESTO CERTIFIED CENTRE

GMI METAL STAMPING INNOVATION CENTRE



WHY CHOOSE US



*Terms and conditions apply

PROGRAMMES OFFERED

DIPLOMA PROGRAMMES

MECHANICAL ENGINEERING

Precision Machining and Assembly

Diploma of Mechanical Engineering Technology (CNC Precision)

(R3/0714/4/0025) (12/27) (MQA/FA 14870)

Diploma in Precision Tooling Engineering Technology

(R3/0714/4/0013) (10/30) (A 5005)

Manufacturing and Management

Diploma of Mechanical Engineering Technology (Manufacturing)

(R2/0714/4/0011) (02/28) (MQA/FA 14871)

Diploma in Engineering Technology (Machine Tools Maintenance)

(R2/0741/4/0008) (12/29) (MQA/FA 4786)

Diploma in Industrial Quality Engineering Technology

(R/0741/4/0001) (10/28) (MQA/FA 10032)

Industrial and Mechanical Design

Diploma in Engineering Technology (Industrial Design)

(R2/0741/4/0010) (02/30) (MQA/FA 4785)

Diploma in Innovative Product Design Engineering Technology

(R3/0741/4/0006) (01/31) (A 7165)

ELECTRICAL ENGINEERING

Industrial Automation and Control

Diploma of Mechatronics Engineering Technology

(R3/0713/4/0041) (07/30) (MQA/FA 14611)

Diploma of Engineering Technology (Instrumentation and Control)

(R3/0741/4/0012) (07/30) (MQA/FA 14612)

Electrical Energy Efficiency

Diploma in Autotronics Engineering Technology

R2/0741/4/0009) (12/29) (MQA/FA 17922)

Diploma of Electronics Engineering Technology (Computer)

(R3/0741/4/0013) (07/30) (MQA/FA 14613)

Diploma in Engineering Technology (Sustainable Energy and Power Distribution)

(R2/522/4/0017) (10/27) (MQA/FA 17923)

COMPUTER & INFORMATION

Diploma in Creative Multimedia

(R2/0211/4/0171) (07/30) (MQA/FA 6035)

Diploma in Software Engineering

(R/0612/4/0007) (03/28) (MQA/FA 9541)

**DIPLOMA INTAKE:
JANUARY & JULY**

PROGRAMMES OFFERED

PRE-UNIVERSITY PROGRAMMES

FOUNDATION, PRE-UNIVERSITY & GENERAL STUDIES

GMI-UTP Foundation Programme (GUPF)

(R/0011/3/0218) (10/30) (MQA/FA 13871)

Foundation Programme in collaboration with Universiti
Teknologi PETRONAS

German University Preparatory Programme (GAPP)

(R3/0011/3/0134) (04/27) (A 7643)

General Certificate of Education - Advanced Level
(GCE 'A' Level) in collaboration with University of Cambridge
Local Examination Syndicate (UCLES), U.K

**GUPF INTAKE:
APRIL & JULY**

**GAPP INTAKE:
JANUARY, MAY & AUGUST**

BACHELOR'S DEGREE PROGRAMME

ELECTRICAL ENGINEERING

Bachelor of Electrical Engineering Technology with Honours (BELT)

(MQA/FA 9760)

Degree Programme in Collaboration with Universiti Teknikal
Malaysia Melaka (UTeM)

**DEGREE INTAKE:
MARCH & OCTOBER**

THE
KNOW-HOW IN MACHINING
& MANUFACTURING WITH
HIGH QUALITY
INDUSTRIAL MACHINERIES
& STANDARDS

MECHANICAL ENGINEERING

- EDM DIE SINKING
- HIGH SPEED MACHINING
- CNC TOOL & CUTTER GRINDER MACHINING
- CNC WIRE CUT
- CMM
- METAL STAMPING
- INJECTION-MOULDING MACHINING
- COORDINATE MEASURING MACHINES

PROGRAMME BRIEF

The students of the CNC Precision programme acquire the technical skills needed to programme, set up and operate CNC (Computer Numerical Control) machines to produce products with accuracy and precise to the design specifications.

Related computer software is used to design parts and create programmes to run the CNC machines. The students are prepared to perform production runs and job set-ups in manufacturing environment.

CORE STUDY AREAS

- Engineering Drawing
- CAD/CAM 3 & 5 Axis
- CNC Milling & Turning Technology
- Tool Cutter Grinder
- Electrical Discharge Machining Technology
- Jigs & Fixtures Design & Manufacturing
- CNC Milling & Turning Multi Axis



SKILLS



TECHNICAL

- CAD/CAM
- CNC Machining
- CNC Programming
- Engineering Drawing
- Inspection
- Reverse Engineering

SOFTWARE

- CATIA
- Powermill CAM
- Siemens Shopturn
- HEIDENHEIN iTNC
- MasterCAM

PROJECT MANAGEMENT

JOB OPPORTUNITIES



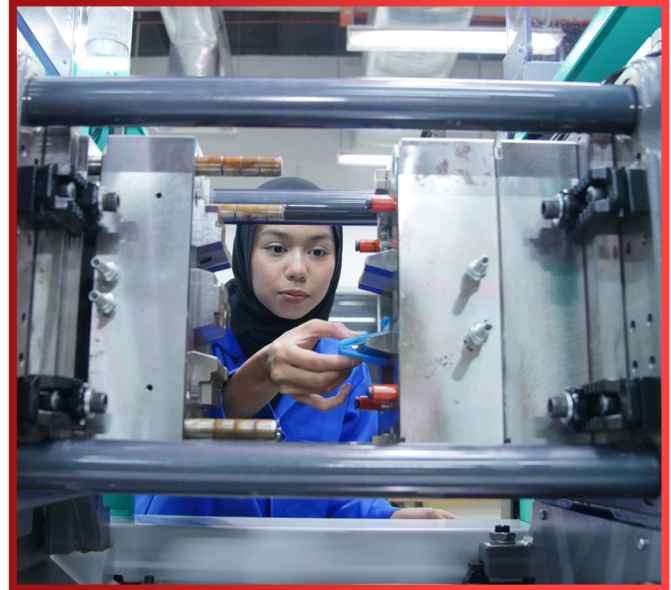
- CNC Machinist
- CAD Designer
- CNC Programmer
- CAM Programmer
- Production Executive
- Maintenance & Servicing Specialist
- Assistant Engineer

PROGRAMME BRIEF

The Precision Tooling Engineering Technology programme is designed to equip students with specialised skills in the high accuracy design and manufacturing of tools & dies, moulds, sheet metal, and precision components. This discipline integrates theoretical knowledge with hands-on experience, emphasising accuracy, efficiency, and innovation in mechanical processes. Throughout the programme, students will work on industry-relevant projects using state-of-the-art machinery and software to ensure their designs and manufactured parts meet stringent local and international standards. Creativity, attention to detail, and a strong understanding of mechanical systems are key to success in this field.

CORE STUDY AREAS

- Tool & Die Design
- Mould Design
- Sheet Metal Design & Development
- CNC Machining and Programming
- Computer-Aided Design (CAD)
- Computer-Aided Manufacturing (CAM)
- Mould and Die Fabrication



SKILLS

TECHNICAL

- Mould, Tool & Die and Sheet Metal
- CAD/CAM
- CNC Machine

SOFTWARE

- CATIA
- Solidworks
- MasterCAM
- CADMAN

PROJECT MANAGEMENT

JOB OPPORTUNITIES

- Production Engineer
- Mould & Die Design Engineer
- Machinist Expert
- Quality Assurance Executive
- Technical Trainer or Consultant
- Application Engineer
- Production Supervisor
- Multi Skill Technician

PROGRAMME BRIEF

The Manufacturing is a programme that emphasises the interrelationships between manufacturing equipment, processes and controls, and their integration into production factories. The combination of technological knowledge of production processes is essential for manufacturing organisations to be efficient, innovative and sustainable in the increasingly competitive markets.

CORE STUDY AREAS

- Automated Manufacturing
- Manufacturing Processes
- Computer Integrated Manufacturing System (CIMS)
- Production Planning Control
- Fundamental Statics & Dynamics



SKILLS



TECHNICAL

- Engineering Drawing
- Smart Manufacturing
- PLC
- Industry 4.0

SOFTWARE

- AutoCAD
- CATIA
- TIA Portal
- Visual Component
- CtrlX Automation

PROJECT MANAGEMENT

JOB OPPORTUNITIES



- Manufacturing Assistant Engineer
- Industrial Assistant Engineer
- Automation Technical Assistant
- Production Assistant Engineer / Technical Supervisor

PROGRAMME BRIEF

As industries shift from manual to CNC machine tools, the need for higher production rates, tighter tolerances, and minimal downtime has made effective machine maintenance more critical than ever. This programme prepares students to meet these demands by providing a comprehensive understanding of machine tool systems, including electrical components, pneumatics and hydraulics, PLCs, mechanical systems, and maintenance management.

Students will learn how each subsystem contributes to overall machine performance and gain hands-on experience in diagnostics, troubleshooting, and preventive maintenance planning. By the end of the programme, they will be equipped to implement strategies that enhance reliability, extend machine lifespan, and support continuous improvement in modern manufacturing environments.

CORE STUDY AREAS

- Machine Systems & Applications
- Machine Maintenance & Restoration
- Machine Upgrades & System Improvements
- Electrical Faults & Diagnostics



SKILLS

TECHNICAL

- Electrical Diagnosis & Troubleshooting
- Machine Calibration and Tolerancing
- Programmable Logic Controller
- Pneumatic and Hydraulic System & Maintenance
- Machine Service and Retrofitting
- Electrical Motor Control
- Machine Condition Monitoring, Maintenance & Management
- Industrial Internet of Things (IIoT)
- Workplace Safety, Health & Environmental Compliance

SOFTWARE

- AutoCAD
- FluidSIM
- ZukenE3
- Siemens TIA

PROJECT MANAGEMENT

JOB OPPORTUNITIES

- Machine Maintenance & Industrial Automation Specialist
- Machine Design & Retrofitting Expert
- Operation & Maintenance Engineer
- Precision Machine Tool Technician
- Manufacturing Systems & Maintenance Project Engineer

PROGRAMME BRIEF

The Industrial Quality programme focuses on the knowledge and skills aspects in the field of inspection and quality management required by the industry. The programme aims to produce skilled, competitive, scientifically-minded, creative, competent, and capable human resources in solving quality issues and problems at a workplace.

CORE STUDY AREAS

- Total Quality Management (TQM)
- Quality Standards & Auditing
- Geometrical Dimension & Tolerance Inspection
- Six Sigma Management System
- Lean Manufacturing
- Continuous Improvement

CERTIFICATE*

- Lean Six Sigma Green Belt
- Ergonomic Trained Person Level 1 (Initial) - DOSH

*Terms & conditions apply



SKILLS



TECHNICAL

- Analysis
- Calibration
- CAD & CMM
- 6-Sigma Green Belt
- Basic Machining

SOFTWARE

- Minitab
- AutoCAD
- Calypso CMM

PROJECT MANAGEMENT

- Process Improvement
- Quality Management System

JOB OPPORTUNITIES



- QA Assistant Engineer
- Quality Assurance Supervisor
- Quality Management System Coordinator
- Audit Assistant Engineer
- Assistant Industrial Engineer
- Process Improvement Coordinator

DIPLOMA IN ENGINEERING TECHNOLOGY (INDUSTRIAL DESIGN)

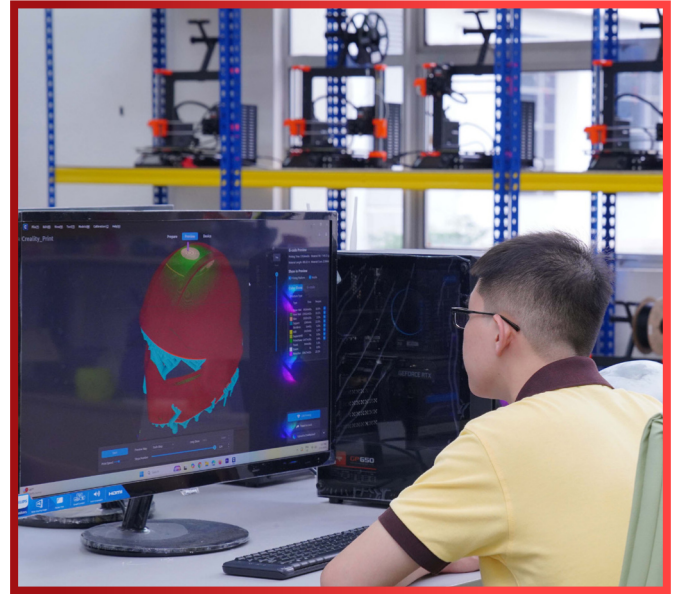
(R2/074 /4/00 0) (02/30) (MQA/FA 4785)

PROGRAMME BRIEF

The Industrial Design programme prepares students to be creative, practical, aesthetics-focused, collaborative problemsolver and to conduct the design process from project brief to design implementation. Students will not only create and develop design work but each creation of design is optimised in its function, value and appearance.

CORE STUDY AREAS

- Industrial Design Project
 - Product Design
- Automotive Design
- Furniture Design
- Digital Design & Styling
- Prototype Technology & Applications
- 3D Modeling
 - Design
 - Rendering
 - Animation



SKILLS



TECHNICAL

- Manual & Digital Sketching
- Model Making
- 3D Modelling
- Drafting
- Ergonomics
- Rapid Prototyping
- Design Project Management
- Design Thinking & Creative Thinking

SOFTWARE

- Inventor
- Fusion
- 3D MAX
- Adobe Photoshop

PROJECT MANAGEMENT

JOB OPPORTUNITIES



- Product / Industrial Designer
- 3D Visualiser
- 3D Modeller
- CAD / CAID Specialist
- Prototype Specialist
- Model Maker
- Draftsman
- Product Planner
- Graphic Designer

PROGRAMME BRIEF

The Innovative Product Design is an industry-focused programme that equips students with the technical expertise, creative thinking, and practical skills needed to design and develop innovative, real-world products. By integrating core engineering principles with product design, CAD/CAM systems, prototyping, digital fabrication, and sustainable practices, the programme emphasises hands-on learning and interdisciplinary collaboration. Graduates will be well prepared for careers in product design, manufacturing, R&D, and industrial innovation, or to pursue further studies in engineering or design-related fields.

CORE STUDY AREAS

- Design Conceptualisation & Ideation
- Creativity & Innovation
- Model Making Techniques
- Prototype Technology & Application
- Ergonomics
- Design for Manufacture & Assembly (DFMA)
- Digital Design & Styling



SKILLS

TECHNICAL

- CAD/CAM
- Reverse Engineering
- Rapid Prototyping
- FEA Analysis

SOFTWARE

- CATIA
- Inventor
- Fusion
- KeyShot

PROJECT MANAGEMENT

JOB OPPORTUNITIES

- Product Designer
- CAD Application Assistant Engineer
- R&D Assistant Engineer
- Quality Assurance Executive

OPPORTUNITIES

TO ENHANCE
QUALITY OF LIFE

ELECTRICAL ENGINEERING

- CLOUD COMPUTING
- SUSTAINABILITY
- MICROELECTROMECHANICAL SYSTEM (MEM)
- SENSORS & ACTUATORS
- MACHINE VISION (MV) TECHNOLOGY
- ROBOTICS
- DATA ACQUISITION
- SCADA
- DCS
- WIRELESS TECHNOLOGY
- GREEN TECHNOLOGY
- FIELDBUS PROTOCOL
- HYBRID-SYSTEM
- AUTOMATIC CONTROL
- POWER SYSTEM

PROGRAMME BRIEF

The Bachelor of Electrical Engineering Technology (B.Eng.Tech.) collaboration program between UTeM-GMI are prepares graduates for careers in various electrical engineering disciplines. It combines theoretical, practical, and soft skill elements to develop well-rounded engineers. The program focuses on equipping students with the skills to meet industry needs through laboratory work, industrial training, design projects, and exposure to professional ethics and practice.

The BELT program at UTeM-GMI refers to the Bachelor of Electrical Engineering Technology with Honours program. The program code is BELT. This program is recognized by the MQA (Malaysian Qualifications Agency) and the accreditation body ETAC.

CORE STUDY AREAS

- Industrial Automation
- Robotics
- Control Systems
- Embedded Systems



SKILLS

TECHNICAL

- Renewable Energy System
- Energy Storage Technology
- PV System Design
- Energy Efficiency
- Electrical Transportation System
- Hybrid Electrical Vehicle
- Industrial Training

SOFTWARE

- Siemens TIA Portal
- Solidworks
- Arduino
- Proteus
- Multisim
- Powerworld
- C++
- PSCAD

MANAGEMENT SKILL

- Technology
- Entrepreneurship

CAREER OPPORTUNITIES

- Building Maintenance Services Engineer
- Plant and Facilities Maintenance
- Electrical Power Engineer
- Research and Development Industrial
- HVAC Controller
- Oil and Gas Engineer

BACHELOR'S DEGREE PROGRAMME ENTRY REQUIREMENTS (LOCAL STUDENTS)

GENERAL UNIVERSITY REQUIREMENTS

A pass in Sijil Pelajaran Malaysia (SPM) with; a credit (Grade C) in Bahasa Melayu/Bahasa Malaysia, or a credit (Grade C) in the Bahasa Melayu/Bahasa Malaysia July paper; and a pass in History for SPM 2013 and onwards in the SPM examination.

AND

Possess a Diploma or any equivalent qualification recognised by the Government of Malaysia and approved by the University Senate;

OR

A Pass in Sijil Tinggi Persekolahan Malaysian (STPM) with a minimum PNGK of 2.00 and at least Grade C (NGMP 2.00) in three (3) subjects, including Pengajian Am;

OR

A Pass in Matriculation / Foundation programme with a minimum CGPA of 2.00;

OR

A Pass in GCE A-Level with at least 9 points;

OR

A pass in International Baccalaureate (IB) Diploma with a minimum of 24 points.

AND

At least Band 2.0 in the Malaysian University English Test (MUET) for examinations from Session 1, 2021 onwards, or at least Band 2 for examinations up to the year 2020 (subject to the validity period at the time of application);

OR

A minimum score of 500 in the Test of English as a Foreign Language (TOEFL) or a minimum Band 5.5 in the International English Language Testing System (IELTS) (only applicable for GCE A-Level and International Baccalaureate Diploma).

AND

Please provide the Certified True copies of the following documents:

SPM Certificate

MUET / IELTS / TOEFL Certificate

STPM / Equivalent Certificate (if applicable)

Complete Academic Transcript

Diploma / Certificate (if any)

Graduation Completion Letter

July Paper Results for Bahasa Melayu (if any)

July Paper Results for Mathematics (if any)

MQA Accreditation Statement

**Financial assistance is subject to the requirements set by the provider*

SPECIFIC ENTRY REQUIREMENTS FOR DIPLOMA HOLDERS / EQUIVALENT

1. Engineering Technology Diploma

A Pass in Engineering Technology Diploma or a related field Diploma with a minimum CGPA of 2.30 from a recognised institution and approved by the University Senate; And
Credit exemption is subject to the consideration and approval of the Faculty; And
Pass or complete the diploma qualification before the application deadline

OR

2. Engineering Diploma

A Pass in Engineering Diploma with a minimum CGPA of 2.00 from a recognised institution and approved by the University Senate; And
Credit exemption is subject to the consideration and approval of the Faculty; And
Pass or complete the diploma qualification before the application deadline.

OR

3. Sijil Tinggi Persekolahan Malaysia (STPM)

A Pass in Sijil Tinggi Persekolahan Malaysia (STPM) with at least Grade C (NGMP 2.00) in each of the following subjects:
Pengajian Am + Mathematics (M) / Mathematics (T) + Physics / Chemistry / Biology; And
At least a Credit (Grade C) in Mathematics / Additional Mathematics at the Sijil Pelajaran Malaysia (SPM) level.

OR

4. Matriculation KPM / Foundation UM / Foundation UiTM / Foundation PINTAR UKM / other recognised foundation programmes

A Pass in Matriculation KPM / Foundation UM / Foundation UiTM / Foundation PINTAR UKM / other recognised foundation programmes, with at least a Grade C (2.00) in the following subjects:
Mathematics + Physics/Chemistry/Biology/Mechanical Engineering/Electrical & Electronic Engineering/Civil Engineering/Basic Engineering
Candidates with Biology must have at least a Credit (Grade C) in Physics at the SPM level.

OR

5. Diploma Kemahiran Malaysia (DKM) / Diploma Lanjutan Kemahiran Malaysia (DLKM)

A Pass in Diploma Kemahiran Malaysia (DKM) / Diploma Lanjutan Kemahiran Malaysia (DLKM) with a minimum CGPA of 3.00 / score of 80% and above in a related field from the Jabatan Pembangunan Kemahiran (JPK) and approved by the University Senate; And
A Pass in Mathematics / Physics / Science at Sijil Pelajaran Malaysia (SPM) level; And
A Pass (Grade E) in English Language at the Sijil Pelajaran Malaysia (SPM) level; And
Pass or complete the diploma qualification before the application deadline; And
Admission is for Year 1 only with no credit exemptions.

**Financial assistance is subject to the requirements set by the provider*

BACHELOR'S DEGREE PROGRAMME ENTRY REQUIREMENTS (INTERNATIONAL STUDENTS)

ENTRY REQUIREMENTS FOR INTERNATIONAL STUDENTS WITH SECONDARY SCHOOL / HIGHER SECONDARY SCHOOL CERTIFICATE

GENERAL UNIVERSITY REQUIREMENTS	<p>Obtained at least 3 principal passes in the General Certificate of Education Advanced Level (GCE A-Level) Examination [UK Examination System] or International Baccalaureate (IB) obtained in one sitting. (For countries which do not follow the UK examination or International Baccalaureate (IB) system, intake consideration shall be based on the equivalency of qualification table by the Malaysian Qualification Agency).</p> <p>AND</p> <p>Have completed at least twelve (12) years of education.</p>
SPECIAL PROGRAMME REQUIREMENT	<p>At least C grade (50% minimum) in GCE A-Level/IB Examination in all of the following subjects: Mathematics + Physics+ at least C grade (50% minimum) in 1 another subject.</p>
LANGUAGE REQUIREMENT	<p>1. Test of English as a Foreign Language (TOEFL) A minimum score of 500 in the Test of English as a Foreign Language (TOEFL) UTeM only accept TOEFL results taken at a date not more than 2 years from the date of admission. For TOEFL results, UTeM only accept Internet-based (IBT)/Computer-based (CBT)/ Paper-based (PBT) formats only.</p> <p style="text-align: center;">OR</p> <p>2. International English Language Testing System (IELTS) A minimum score/band 5.0 in the International English Language Testing System (IELTS). UTeM only accept IELTS results taken at a date not more than 2 years from the date of admission.</p> <p style="text-align: center;">OR</p> <p>3. Malaysian University English Test (MUET) A minimum score/ band 3 in the Malaysian University English Test (MUET). UTeM only accept MUET results taken at a date not more than 5 years from the date of admission.</p>

Applicants without TOEFL or IELTS shall be required to attend and pass the Academic English Programme conducted between three (3) to nine (9) months prior to the Bachelor programme registration.

ENTRY REQUIREMENTS FOR INTERNATIONAL STUDENTS WITH DIPLOMA FROM INSTITUTIONS OF HIGHER LEARNING

GENERAL UNIVERSITY REQUIREMENTS	A Diploma from an institution of higher learning recognised by the Government of Malaysia and approved by the Senate of the University;
SPECIAL PROGRAMME REQUIREMENT	Diploma in the related field with a final CGPA of at least 3.00 out of 4.00 or equivalent.
LANGUAGE REQUIREMENT	<p>1. Test of English as a Foreign Language (TOEFL) A minimum score of 500 in the Test of English as a Foreign Language (TOEFL) UTeM only accept TOEFL results taken at a date not more than 2 years from the date of admission. For TOEFL results, UTeM only accept Internet-based (IBT)/Computer-based (CBT)/Paper-based (PBT) formats only.</p> <p style="text-align: center;">OR</p> <p>2. International English Language Testing System (IELTS) A minimum score/band 5.0 in the International English Language Testing System (IELTS). UTeM only accept IELTS results taken at a date not more than 2 years from the date of admission.</p> <p style="text-align: center;">OR</p> <p>3. Malaysian University English Test (MUET) A minimum score/band 3 in the Malaysian University English Test (MUET). UTeM only accept MUET results taken at a date not more than 5 years from the date of admission.</p>

Applicants without TOEFL or IELTS shall be required to attend and pass the Academic English Programme conducted between three (3) to nine (9) months prior to the Bachelor programme registration.

FEES STRUCTURE FOR BACHELOR'S DEGREE PROGRAMME (LOCAL STUDENTS)

TYPE & FEE CATEGORIES	SEM 1	SEM 2	SEM 3	SEM 4	SEM 5	SEM 6	SEM 7	SEM 8	TOTAL (MYR)
A) ONCE THROUGHOUT DURATION OF STUDY									
1)Orientation programme	268	-	-	-	-	-	-	-	268
2)Registration	20	-	-	-	-	-	-	-	20
3)Processing	30	-	-	-	-	-	-	-	30
4)Co-Curriculum	200	-	-	-	-	-	-	-	200
5)Student ID Card	50	-	-	-	-	-	-	-	50
6)Alumni	100	-	-	-	-	-	-	-	100
7)Upfront Payment	1,000	-	-	-	-	-	-	-	1,000
TOTAL A	1,668	-	-	-	-	-	-	-	1,668
B) TO BE PAID FOR EACH SEMESTER									
1) Activities Fee	45	45	45	45	45	45	45	45	360
2) Services Fee	420	420	420	420	420	420	420	420	3,360
3) Tuition Fee	8,625	8,625	8,625	8,625	8,625	8,625	8,625	8,625	69,000
4) Student Charity	30	30	30	30	30	30	30	30	240
5) Convocation	-	-	-	-	-	-	-	130	130
6) Professional Certificate	300	300	300	300	-	-	-	-	1,200
TOTAL B	9,420	9,420	9,420	9,420	9,120	9,120	9,120	9,250	74,290
TOTAL COURSE FEE (A+B)	11,088	9,420	9,420	9,420	9,120	9,120	9,120	9,250	75,958
C) TO BE PAID FOR EACH SEMESTER									
HOSTEL FEE	900	900	900	900	900	900	900	900	7,200
GRAND TOTAL COURSE FEE (A+B+C)	11,988	10,320	10,320	10,320	10,020	10,020	10,020	10,150	83,158

FEES STRUCTURE FOR BACHELOR'S DEGREE PROGRAMME (INTERNATIONAL STUDENTS)

TYPE & FEE CATEGORIES	SEM 1	SEM 2	SEM 3	SEM 4	SEM 5	SEM 6	SEM 7	SEM 8	TOTAL (MYR)
A) ONCE THROUGHOUT DURATION OF STUDY									
1)Orientation programme	268	-	-	-	-	-	-	-	268
2)Registration	20	-	-	-	-	-	-	-	20
3)Processing	30	-	-	-	-	-	-	-	30
4)Co-Curriculum	200	-	-	-	-	-	-	-	200
5)Student ID Card	50	-	-	-	-	-	-	-	50
6)Alumni	100	-	-	-	-	-	-	-	100
7)Upfront Payment	1,000	-	-	-	-	-	-	-	1,000
TOTAL A	1,668	-	-	-	-	-	-	-	1,668
B) TO BE PAID FOR EACH SEMESTER									
1) Activities Fee	45	45	45	45	45	45	45	45	360
2) Services Fee	420	420	420	420	420	420	420	420	3,360
3) Tuition Fee	10,000	10,000	10,000	10,000	10,000	10,000	10,000	9,999	79,999
4) Student Charity	30	30	30	30	30	30	30	30	240
5) Convocation	-	-	-	-	-	-	-	130	130
6) Professional Certificate	300	300	300	300	-	-	-	-	1,200
TOTAL B	10,795	10,795	10,795	10,795	10,495	10,495	10,495	10,624	85,289
TOTAL COURSE FEE (A + B)	12,463	10,795	10,795	10,795	10,495	10,495	10,495	10,624	86,957

Note

- a) Upfront payment is non-refundable
- b) Fees subject to change

Payment Method

- a) All fees stated are in Malaysian Ringgit (MYR) unless otherwise stated
- b) All payments are to be made to the following banking details:

Beneficiary: German-Malaysian Institute
 Bank: CIMB Bank
 Account No. : 800 2777 436
 SWIFT Code: CIBBMYKL

Additional Requirement for International Students:

ITEM	AMOUNT	PAY TO GMI	PAY TO EMGS
COMMITMENT FEE	RM2,000	✓ (Upon Acceptance)	-
ACCOMMODATION	RM750/ MONTH	✓	-
INTERNATIONAL STUDENT ANNUAL FEE	RM2,300/ YEAR	-	✓ (subject to EMGS's policy)
MEDICAL & HEALTH INSURANCE SCHEME	RM500/ YEAR	✓	-
PERSONAL BOND	RM1,500	-	✓ (subject to immigration rules)

Note

EMGS = Education Malaysia Global Services

Immigration = Immigration Department of Malaysia

PROGRAMME BRIEF

The Autotronics programme is designed to equip students with the skills and knowledge required for the ever-evolving automotive industry. The focus is on modern electronic control systems, vehicle sub-systems, and advanced diagnostic techniques. Students will gain practical experience and theoretical understanding of technologies such as Hybrid & Electric Vehicles (HEV), engine management systems, and automotive communication networks like CAN Bus and LIN Bus. This programme emphasises hands-on experience with state-of-the-art diagnostic tools and real-world automotive technologies to ensure students are industry-ready upon graduation.

CORE STUDY AREAS

- Hybrid & Electric Vehicle Technologies
- Automotive Electrical Systems
- Engine Management & Diagnostics
- Digital Communication in Automotive



SKILLS



TECHNICAL

- Vehicle Troubleshooting Using Scan Tool
- Electric Vehicle Battery Installation and Troubleshooting
- Electric Vehicle Maintenance

SOFTWARE

- Launch IMMO Pad
- Autel Maxisys UltraEV
- Lotus Engine Simulation
- LN CAN/CarTrain Simulator

MANAGEMENT SKILL

- Industrial Management
- Entrepreneurship
- Project Management

JOB OPPORTUNITIES



- Automotive Electrical Technician
- Automotive Diagnostician
- Service Advisor (EV & HEV)
- Sales & Application Engineer (EV Components)
- Research and Development Engineer
- Automotive Maintenance Entrepreneur

PROGRAMME BRIEF

The Computer programme equips students with profound knowledge and skills of electronic circuits and systems knowledge of telecommunications and computer controlled systems needed to meet the 21st century industrial demands. The student will be able to design and build electronic and computer-based systems and thus, preparing them to work in the high-tech industry.

CORE STUDY AREAS

- Computer Programming
- Embedded Controller
- Computer Interfacing Technology
- Microelectromechanical System
- Apps Development
- Internet-of-Things
- Artificial Intelligence
- Radio Frequency & Data Communication



SKILLS



TECHNICAL

- Electronics Circuit Troubleshooting
- Web-Based Apps Development
- Database Management System (DBMS)
- PC-Based Apps Development
- Mobile Application Development
- Embedded System Development
- Robot Operating System Technology
- Network Setup & Configuration

SOFTWARE

- C++
- Java
- Ms VS Code
- MySQL
- Python
- HTML/PHP

MANAGEMENT SKILL

- Industrial Management
- Entrepreneurship
- Project Management

JOB OPPORTUNITIES



- IT Assistant
- System Programmer / Analyst / Manager
- Telecommunication Technologist
- Electronics Support Specialist
- Junior Software Developer

PROGRAMME BRIEF

The programme provides student with sound theoretical and practical training in the operation and maintenance of automated process control and measurement systems to maintain a consistent product output. It is the art and science of measurement and control of process variables within a production, laboratory or manufacturing area in the instance of typical process variables of industrial reactors that can be controlled.

CORE STUDY AREAS

- Distributed Control System (DCS)
- Process Control Instrumentation
- Instrument Calibration & Maintenance
- Sensor & Transducer
- Supervisory Control & Data Acquisition (SCADA)



SKILLS



TECHNICAL

- Instruments Selection and Calibration
- Control System Strategy Identification
- Analogue and Digital Parameters Measurement
- Programmable Logic Controllers (PLC) Configuration and Programming
- Distributed Control System (DCS) Configuration and Programming
- Process Plant Electrical and Control Wiring

SOFTWARE

- Siemens PCS 7
- Emerson DeltaV
- Siemens Tia Portal
- LabView

MANAGEMENT SKILL

- Industrial Management
- Entrepreneurship
- Project Management

JOB OPPORTUNITIES



- Field Assistant Engineer
- Control & Instrumentation Technologist
- Service Assistant Engineer
- Process Assistant Engineer

PROGRAMME BRIEF

The Mechatronics programme is an interdisciplinary field involving control systems, electronic systems, computers, robotics and mechanical systems. The skills are highly needed for Mechatronics Technologist in an automated manufacturing processes to control product quality while applying a combination of technologies needed to ensure machine effectiveness, reliability and user friendliness.

CORE STUDY AREAS

- Programmable Logic Controller & Human Machine Interface
- Computer Integrated Manufacturing
- Industrial Robotics
- Machine Design

CERTIFICATE*

- FESTO Certification on Pneumatics
- FESTO Certification on Hydraulics
- FESTO Certification on Introduction to Industry 4.0 and Its Core Elements (IND401)
- FESTO Certification on Modular Production System

*Terms & conditions apply



SKILLS



TECHNICAL

- Automation System Maintenance
- Mechanical System in Automation System Design
- Sensors and Actuator, Selection and Sizing
- Programmable Logic Controllers(PLC) Configuration and Programming.
- Industrial Robot Simulation and Programming
- Machine Electrical and Control Wiring

SOFTWARE

- Siemens TIA Portal
- Solidworks
- Zuken E3
- Kuka Sim Pro

MANAGEMENT SKILL

- Industrial Management
- Entrepreneurship
- Project Management

JOB OPPORTUNITIES



- Assistant Mechatronics Engineer
- Automation Technical Specialist
- Automation System Designer
- Remote Operating Vehicle (ROV) Supervisor

PROGRAMME BRIEF

This programme focuses on the main renewable energy technologies namely photovoltaic solar, wind, hydro and biomass with solid foundations of configuration process, installation, testing and commissioning and maintenance using advanced equipment to cater for the demand of green energy. With the skill set, graduates are able to combine the system through the integration of power generation and energy management.

CORE STUDY AREAS

- Photovoltaic Principles & Materials
- Hydro & Wind Energy System
- Renewable Energy System
- Energy Audit
- Energy Management
- Power Distribution



SKILLS

TECHNICAL

- PV Solar System Design and Maintenance
- Wind & Hydro System Maintenance
- Energy Audit & Management
- Microcontroller Programming
- Programmable Logic Controllers (PLC) Configuration and Programming
- Electrical Wiring

SOFTWARE

- LabSoft Lucas-Nuelle
- Siemens TIA Portal
- Solidwork
- PVSyst

MANAGEMENT SKILL

- Industrial Management
- Entrepreneurship
- Project Management

JOB OPPORTUNITIES

- Renewable Energy Technician
- Power Distribution Engineer
- Energy Consultant
- Electrical Maintenance Supervisor
- Smart Grid Technician
- Solar Installer

SHAPING A SAFER,
BRIGHTER FUTURE
THROUGH CREATIVITY
AND INNOVATION

COMPUTER & INFORMATION

- CLOUD COMPUTING
- SUSTAINABILITY
- NETWORK FORENSICS
- WIRELESS TECHNOLOGY
- ANDROID PROGRAMMING
- DATA ACQUISITION
- NETWORKING (CCNA)
- PHOTOGRAPHY
- 2D & 3D ANIMATION & MODELLING

PROGRAMME BRIEF

The programme familiarise students with the overall process of producing digital work art, particularly in 2D and 3D. It emphasises nurturing creative young minds to the workflow of media during pre-production stage, production and postproduction stage. Students will be actively exposed in creative design and animation with state-of art software and hardware for producing short multimedia animation together with narration using industry standard recording studio for sound editing and mixing. The programme also nurtures awareness as digital entrepreneurs, promotes thinking and problem-solving skills, and life-long learning.

CORE STUDY AREAS

- Sketching & Drawing
- Graphic Design & Desktop Publishing
- Modelling & Animation in 2D & 3D
- Interactive Courseware
- Games Application
- Audio Editing & Mixing
- Video Editing & Rendering
- Photography
- Website & Mobile Application

CERTIFICATE*

- Adobe Certified Professional-Visual Design using Adobe Photoshop

*Terms & conditions apply



SKILLS



TECHNICAL

- Sketching
- Drawing
- Graphic Design
- Photography and Videography
- Modelling
- 2D and 3D Animation and Rendering

SOFTWARE

- Adobe Illustrator
- Adobe Photoshop
- Adobe Premiere
- Adobe Animate
- Toon Boom Harmony
- Maya Autodesk
- Web HTML + Web PHP
- Android Studio

MANAGEMENT SKILL

- Entrepreneurship
- Project Management

JOB OPPORTUNITIES



- Creative Media Editor
- Web Designer
- Creative Designer
- Graphic Designer
- 2D/3D Animator

PROGRAMME BRIEF

Software Engineering focuses on the development and testing of intelligent software systems, incorporating both the Software Development Life Cycle (SDLC) and Software Testing Life Cycle (STLC). Students will gain hands-on experience in developing applications using programming languages such as C, Java, PHP, and Android, with an emphasis on data structures and database management.

Additionally, the programme explores the integration of IoT and AI, enabling real-time data collection, analysis, and decision-making to enhance automation and efficiency. Software will be tested across multiple criteria including functionality, performance, and quality, with a strong focus on automation testing techniques.

CORE STUDY AREAS

- Artificial Intelligence
- Android Programming
- Internet of Things
- Laravel Web Development

CERTIFICATE*

- Cisco IT Essentials
- Cisco CCNA Network Fundamental
- Cisco Internet of Things

*Terms & conditions apply



SKILLS

TECHNICAL

- Web Development
- Mobile Development
- Computer Hardware Troubleshoot
- Software Testing
- Requirement Engineering (Business Analysis)
- Artificial Intelligence
- Internet of Things

SOFTWARE

- LDRA (Liverpool Data Research Association)
- Enterprise Architecture/ Spark System 16.0
- Android Studio IDE
- Arduino IDE

MANAGEMENT SKILL

- Industrial Management
- Entrepreneurship
- Project Management

JOB OPPORTUNITIES

- Software Engineer
- Software Tester
- IoT Engineer
- Android Programmer
- AI Engineer

DIPLOMA PROGRAMMES ENTRY REQUIREMENT

MQA Programme Standard: Engineering and Engineering Technology

Programmes

MECHANICAL ENGINEERING

- **Diploma in Precision Tooling Engineering Technology**
- **Diploma in Innovative Product Design Engineering Technology**

Minimum Entry Requirements

- Pass **SPM** or an equivalent qualification with at least a credit in the following 3 subjects: Mathematics + 1 subject Science/Technical/Vocational + 1 other subject AND pass in English; **OR**
- Pass **O-Level** with at least Grade C in 3 subjects, including Mathematics + 1 subject Science/Technical/Vocational + 1 other subject AND pass in English; **OR**
- Pass **UEC** with at least Grade B in 3 subjects, including Mathematics + 1 subject related to Science/Technical/Vocational + 1 other subject from any field AND pass in English; **OR**
- Pass a **Certificate in a related field** from a Higher Education Provider recognised by the Government of Malaysia, with a minimum CGPA of 2.00; **OR**
- Pass a **Technical and Vocational Certificate/Skills Certificate** in a related field, recognized or equivalent, with 1 year of relevant work experience or a minimum of 1 semester of a bridging programme AND pass SPM with at least 1 credit
Note: SKM must be at Level 3; **OR**
- Pass **STPM** with at least 1 principal in any subject AND pass in Mathematics, English and 1 other subject at SPM level; **OR**
- Pass **Pre-Diploma or Matriculation** in a related field with a minimum CGPA of 2.00 AND pass SPM with at least 3 credits, including Bahasa Melayu and 2 other subjects AND pass in English; **OR**
- APEL.A T-4** AND appropriate experience as determined by the IHL; **OR**
- Any other qualifications recognised as equivalent by the Government of Malaysia.

Additional Requirement for SVM:

- At least C in BM 1104 + Pass Sejarah 1251
- At least 3 credits in vocational subjects equivalent to SPM elective subjects
- Minimum CGPA 2.00 (Academic)
- Minimum CGPA of 2.67 (Vocational)
- Competent in all vocational modules

For International Students:

Test of English as a Foreign Language (TOEFL) score of 500 or International English Language Testing System (IELTS) score of 5.0 or equivalent

Other Requirements:

No physical disabilities that would hinder practical work AND no colour blindness
Must pass a medical examination AND urine test

• Financial assistance is subject to the requirements set by the provider

Programmes

COMPUTER & INFORMATION• **Diploma in Software Engineering**

Minimum Entry Requirements

- i. Pass **SPM** with at least 3 credits in any subjects (inclusive of Mathematics or any equivalent qualification); **OR**
- ii. Pass **O-Level** with at least Grade C in 3 credits in any subjects inclusive of Mathematics; **OR**
- iii. Pass **STPM** with a minimum Grade C of Grade Point 2.00 in a subject **AND** a credit in Mathematics at SPM level (or Mathematics equivalent to SPM); **OR**
- iv. Pass **STAM** with a minimum grade of Maqbul (Pass) **AND** a credit in Mathematics at SPM level (or Mathematics equivalent to SPM); **OR**
- v. Pass **SKM Level 3** in a related field (Candidates without Mathematics can be admitted subject to a thorough rigorous assessment to determine their competencies in Mathematics that are equivalent to SPM level); **OR**
- vi. A Certificate (**Level 3, MQF**) in a related field with at least a CGPA of 2.00; **OR**
- vii. **APEL.A T-4 AND** appropriate experience as determined by the IHL; **OR**
- viii. Other relevant and equivalent qualifications recognised by the Malaysian Government.
(Candidates can be admitted if their admission qualification contains Mathematics subject(s) equivalent to Mathematics at the SPM level. Those without a pass in Mathematics at SPM level or equivalent can be admitted but required to take and pass reinforcement Mathematics subject. The reinforcement Mathematics subject must be offered in the first semester or before enrollment with unconditional offer).

Notes:

- Candidates with a pass in Mathematics at the SPM level (or Mathematics equivalent to SPM) may be admitted if their admission qualification contains Mathematics subject(s) equivalent to Mathematics at the SPM level.
- Candidates with a pass in Mathematics at SPM level (or Mathematics equivalent to SPM) and without a Mathematics subject in their admission qualification need to take and pass the reinforcement Mathematics subject that is equivalent to the SPM level. The reinforcement Mathematics subject must be offered in first semester or before enrollment with unconditional offer.
- Candidates with a credit in Computing-related subject(s) at the SPM level (or equivalent to SPM level) may be given preferential consideration.

Additional Requirement for SVM:

- At least C in BM 1104 + Pass Sejarah 1251
- At least 3 credits in vocational subjects equivalent to SPM elective subjects
- Minimum CGPA 2.00 (Academic)
- Minimum CGPA of 2.67 (Vocational)
- Competent in all vocational modules

For International Students:

Test of English as a Foreign Language (TOEFL) score of 500 or International English Language Testing System (IELTS) score of 5.0 or equivalent

Programmes

Minimum Entry Requirements

COMPUTER & INFORMATION

• **Diploma in Creative Multimedia**

- i. Pass **SPM** or an equivalent qualification with at least 3 credits or an equivalent; **OR**
- ii. Pass **O-Level** with at least Grade C in 3 subjects, including Mathematics + 1 subject related to Science/Technical/Vocational + 1 other subject **AND** pass in English; **OR**
- iii. A recognized Creative Multimedia Certificate or an equivalent qualification; **OR**
- iv. A recognized **Technical and Vocational Certificate** in a related field or an equivalent qualification, with 1 year of relevant work experience or 1 semester of a bridging programme; **OR**
- v. **SKM Level 3 AND** SPM with at least 1 credit; **OR**
- vi. **APEL.A T-4 AND** appropriate experience as determined by the IHL; **OR**
- vii. Other qualifications recognised as equivalent by the Government of Malaysia.

Additional Requirement for SVM:

- At least C in BM 1104 + Pass Sejarah 1251
- At least 3 credits in vocational subjects equivalent to SPM elective subjects
- Minimum CGPA 2.00 (Academic)
- Minimum CGPA of 2.67 (Vocational)
- Competent in all vocational modules

For International Students:

Test of English as a Foreign Language (TOEFL) score of 500 or International English Language Testing System (IELTS) score of 5.0 or equivalent.

• Financial assistance is subject to the requirements set by the provider

Programmes

ELECTRICAL ENGINEERING

- **Diploma of Mechatronics Engineering Technology**
- **Diploma of Engineering Technology (Instrumentation and Control)**
- **Diploma of Electronics Engineering Technology (Computer)**
- **Diploma in Engineering Technology (Sustainable Energy and Power Distribution)**
- **Diploma in Autotronics Engineering Technology**

MECHANICAL ENGINEERING

- **Diploma of Mechanical Engineering Technology (CNC Precision)**
- **Diploma of Mechanical Engineering Technology (Manufacturing)**
- **Diploma in Industrial Quality Engineering Technology**

Minimum Entry Requirements

- i. Pass **SPM** with at least 3 credits, including Mathematics + 1 subject Science/Technical + 1 other subject; **OR**
- ii. Pass **O-Level** with at least Grade C in 3 subjects, including Mathematics + 1 subject Science/Technical/Vocational + 1 other subject **AND** pass English; **OR**
- iii. **Pass SKM Level 3** in a related field, and:
 - a. Pass SPM with at least 1 credit; and
 - b. Complete a bridging programme, if necessary, alongside the existing curriculum during the course of study, provided that the duration does not exceed 1 year or 2 semesters; **OR**
- iv. Pass **Sijil Kolej Komuniti** equivalent to Malaysian Qualifications Framework (MQF) Level 3 in a related field, and:
 - a. Pass SPM with at least 1 credit; and
 - b. Complete a bridging programme, if required; **OR**
- v. Pass **MQF Level 3 Certificate** in a related field with a minimum CGPA of 2.00; **OR**
- vi. **APEL.A T-4 AND** appropriate experience as determined by the IHL; **OR**
- vii. Other qualifications recognised as equivalent.

Additional Requirement for SVM:

- At least C in BM 1104 + Pass Sejarah 1251
- At least 3 credits in vocational subjects equivalent to SPM elective subjects
- Minimum CGPA 2.00 (Academic)
- Minimum CGPA of 2.67 (Vocational)
- Competent in all vocational modules

For International Students:

Test of English as a Foreign Language (TOEFL) score of 500 or International English Language Testing System (IELTS) score of 5.0 or equivalent

Other Requirements:

- a. No physical disabilities that would hinder practical work **AND** no colour blindness; and
- b. Must pass a medical examination and urine test.

• Financial assistance is subject to the requirements set by the provider

MBOT Standard

Programmes	Minimum Entry Requirements
<p>MECHANICAL ENGINEERING</p> <ul style="list-style-type: none">• Diploma in Engineering Technology (Industrial Design) • Diploma in Engineering Technology (Machine Tools Maintenance)	<ol style="list-style-type: none">Pass SPM with at least 3 credits in any subjects; ORPass O-Level with at least Grade C in 3 subjects; ORPass at least 1 semester of a pre-diploma programme, with SPM or an equivalent qualification and at least 3 credits in any subjects; ORPass UEC with at least Grade B in 3 subjects; ORPass SKM Level 3 in a related field, and<ol style="list-style-type: none">Pass SPM with at least 1 credit; andComplete 1 semester of a bridging programme; ORPass Malaysian Qualifications Framework (MQF) Level 3 Certificate with a minimum CGPA of 2.00 or equivalent; ORPass a recognised Vocational Certificate in a related field or an equivalent qualification with a minimum CGPA of 2.00; ORPass STPM or an equivalent qualification with at least Grade C (CGPA 2.00) in any subject; ORPass the STAM (Maqbul Grade) or an equivalent qualification; ORAPEL.A T-4 AND appropriate experience as determined by the IHL; OROther qualifications recognised as equivalent. <p>Additional Requirement for SVM:</p> <ul style="list-style-type: none">• At least C in BM 1104 + Pass Sejarah 1251• At least 3 credits in vocational subjects equivalent to SPM elective subjects• Minimum CGPA 2.00 (Academic)• Minimum CGPA of 2.67 (Vocational)• Competent in all vocational modules <p>For International Students:</p> <p>Test of English as a Foreign Language (TOEFL) score of 500 or an International English Language Testing System (IELTS) score of 5.0 or equivalent</p> <p><i>Other Requirements:</i></p> <ol style="list-style-type: none">No physical disabilities that would hinder practical work AND no colour blindness; andMust pass a medical examination and urine test.

• Financial assistance is subject to the requirements set by the provider

FEES STRUCTURE FOR DIPLOMA PROGRAMME (LOCAL STUDENTS)

TYPE & FEE CATEGORIES	SEMESTER 1	SEMESTER 2	SEMESTER 3	SEMESTER 4	SEMESTER 5	SEMESTER 6	TOTAL (MYR)
(a) TUITION FEES							
(1) Diploma - 3 years/6 semesters	5,554	5,554	5,554	5,554	5,554	5,554	33,324
(b) OTHER FEES							
Deposit	500	-	-	-	-	-	500
Orientation Fee	200	-	-	-	-	-	200
Registration Fee	100	100	100	100	100	100	600
Service Fee	100	100	100	100	100	100	600
Activity Fee	50	50	50	50	50	50	300
TOTAL	950	250	250	250	250	250	2,200
(c) HOSTEL FEES (optional)	900	900	900	900	900	900	5,400
DIPLOMA FEES (a + b)	6,504	5,804	5,804	5,804	5,804	5,804	35,524
DIPLOMA FEES + HOSTEL FEE (a + b + c)	7,404	6,704	6,704	6,704	6,704	6,704	40,924

FEES STRUCTURE FOR DIPLOMA PROGRAMME (INTERNATIONAL STUDENTS)

TYPE & FEE CATEGORIES	SEMESTER 1	SEMESTER 2	SEMESTER 3	SEMESTER 4	SEMESTER 5	SEMESTER 6	TOTAL (MYR)
(a) TUITION FEES							
(1) Diploma - 3 years/6 semesters	9,000	9,000	9,000	9,000	9,000	9,000	54,000
(b) MISC FEES							
Application Processing Fee*	500	-	-	-	-	-	500
Deposit	500	-	-	-	-	-	500
Orientation Fee	250	-	-	-	-	-	250
Registration Fee	100	100	100	100	100	100	100
Service Fee	200	200	200	200	200	200	1,200
Activity Fee	50	50	50	50	50	50	300
TOTAL FOR MISC FEES	1,600	350	350	350	350	350	3,350
(c) HOSTEL FEES (optional)	900	900	900	900	900	900	5,400
DIPLOMA FEES (a + b)	10,600	9,350	9,350	9,350	9,350	9,350	57,350
DIPLOMA FEES + HOSTEL FEE (a + b + c)	11,500	10,250	10,250	10,250	10,250	10,250	62,750

**All fees are subject to change*

Note:

1. All fees stated are in Malaysian Ringgit (MYR) unless otherwise stated
2. Application processing fee (RM 500) is payable upon submission of admission application
3. All payments to be made payable to the following banking particulars:
Beneficiary :German-Malaysian Institute
Bank :CIMB Bank
Account No :800 2777 436
Swift code: CIBB MY KL



**FOUNDATION, PRE-UNIVERSITY
& GENERAL STUDIES**

PROGRAMME BRIEF

GAPP was launched in 2001 for students who want to pursue their education in Germany in the field of Engineering.

Germany is well known for having:

1. International Recognition
2. High Academic Standards
3. Affordable Tuition Fees
4. Practical-Centric Education



GAPP ACCREDITATION:



CAMBRIDGE
International Education

Mathematics 9709
Physics 9702
Chemistry 9701
German 8027

telc Zertifiziertes
Prüfungszentrum
LANGUAGE TESTS Certified
Examination Centre

German Language Level A2 - C1

GMI

Vorpraktikum

440 hours of Vorpraktikum
(Pre-Study Technical Internship)

**GAPP INTAKE: JANUARY,
MAY & AUGUST**

PROGRAMME STRENGTH

1. GMI is the only institute that offers a 3-in-1 programme to study at the University of Applied Sciences (UAS), in Germany for Malaysian and International students.
2. GMI lecturers are fully qualified to teach Cambridge A-Level and we have produced excellent results in the Cambridge Examination.
3. GMI students have been awarded the Outstanding Cambridge Learner Awards such as, Top in Malaysia for German Language in 2014, 2015, 2016, 2021 and Top in the World for Mathematics in 2010, 2013, 2017 and 2019.
4. GMI is a TELC language centre authorised to conduct TELC German language examination for levels A2, B1, B2 and C1.



GAPP ENTRY REQUIREMENT:

YTP MARA

- Bumiputera
- SPM with 8As in English, Physics, Additional Mathematics, Chemistry and 4 other subjects
- Apply at: www.mara.gov.my

**Terms and conditions apply*

SELF SPONSORED (LOCAL & INTERNATIONAL)

- SPM/IGCSE/O-Level with 5Cs in English, Mathematics, Additional Mathematics, Physics and Chemistry
- Apply at: www.gmi.edu.my

FEES STRUCTURE FOR GAPP (LOCAL STUDENTS)

TYPE & FEE CATEGORIES		SEMESTER 1	SEMESTER 2	SEMESTER 3	SEMESTER 4	TOTAL (MYR)
A	GAPP COURSE FEE	10,600	10,600	10,600	10,600	42,400
B	MISCELLANEOUS FEES					
	Deposit	500	-	-	-	500
	Orientation Fee	250	-	-	-	250
	Registration Fee	100	100	100	100	400
	Service Fee	125	125	125	125	500
	Activity Fee	200	150	150	150	650
	Examination Fee		3,650	3,650		7,300
	TOTAL MISCELLANEOUS FEES	1,175	4,025	4,025	375	9,600
C	HOSTEL FEE (optional)	900	900	900	900	3,600
	GAPP COURSE FEE WITHOUT HOSTEL (A + B)	11,775	14,625	14,625	10,975	52,000
	GAPP COURSE FEE WITH HOSTEL (A+B+C)	12,675	15,525	15,525	11,875	55,600

**All fees are subject to change*

FEES STRUCTURE FOR GAPP (INTERNATIONAL STUDENTS)

TYPE & FEE CATEGORIES		SEMESTER 1	SEMESTER 2	SEMESTER 3	SEMESTER 4	TOTAL (MYR)
A	GAPP COURSE FEE	17,550	17,550	15,000	15,000	65,100
B	MISCELLANEOUS FEES					
	Application Processing Fee*	500	-	-	-	500
	Deposit	500	-	-	-	250
	Orientation Fee	250	100	100	100	400
	Registration Fee	100	125	125	125	500
	Service Fee	125	150	150	150	650
	Activity Fee	200	3,650	3,650		7,300
	Examination Fee					
	TOTAL MISCELLANEOUS FEES	1,675	4,025	4,025	375	10,100
C	HOSTEL FEE (optional)	900	900	900	900	3,600
	GAPP COURSE FEE WITHOUT HOSTEL (A + B)	19,225	21,575	19,025	15,375	75,200
	GAPP COURSE FEE WITH HOSTEL (A+B+C)	20,125	22,475	19,925	16,275	78,800

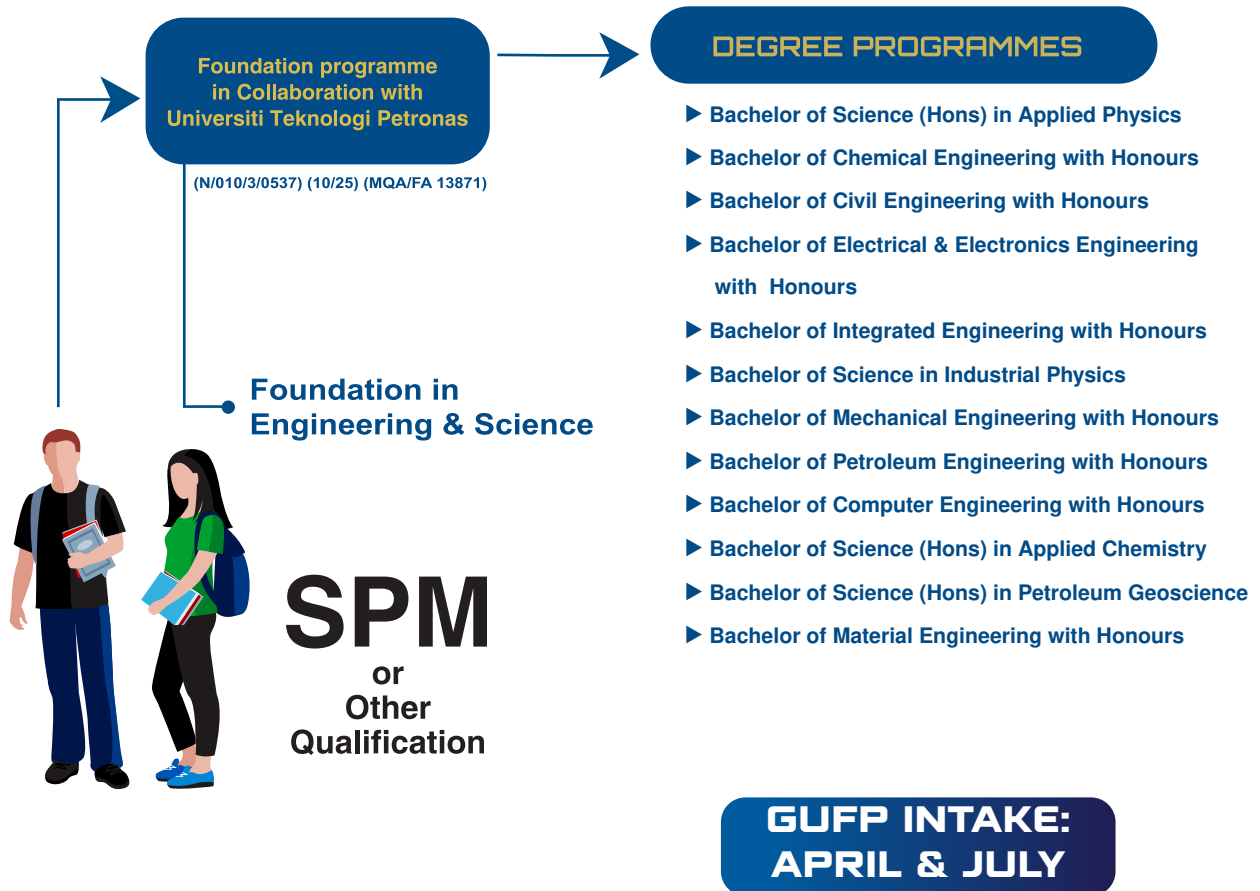
**All fees are subject to change*

Note:

1. All fees stated are in Malaysian Ringgit (MYR) unless otherwise stated
2. Application processing fee (RM 500) is payable upon submission of admission application
3. All payments to be made payable to the following banking particulars:
 Beneficiary :German-Malaysian Institute
 Bank :CIMB Bank
 Account No :800 2777 436
 Swift code: CIBB MY KL

PROGRAMME BRIEF

Foundation in Collaboration with Universiti Teknologi PETRONAS also known as GMI-UTP Foundation Programme (GUPP) is a strategic partnership between GMI (German-Malaysian Institute) and UTP (Universiti Teknologi PETRONAS). This programme is a one-year foundation programme based on UTP's foundation syllabus. Upon completion, students will be qualified to start their Undergraduate Programme at UTP.



WHY GUFPP?

1

Prime Location

Ideal environment for a smooth transition to tertiary studies

- Strategic area in Klang Valley
- Safe and secure campus with a gated community

2

Curriculum

Access the same syllabus used for UTP's foundation studies

- Programme structure based on UTP's Engineering & Science foundation
- English as the medium of instruction

3

Enriching Learning Experience

Experience the best of both institutions and broaden your academic horizon

- Small-scale and strategic group study
- High passing rate and quality education

4

Secure Pathway to a UTP Degree

- Exclusive placement opportunities to continue your Undergraduate studies* at UTP

5

Foundation with a German Essence

Chance to learn German language & culture

- Weekly German language classes & activities available
- Unique to GMI

*Terms and conditions apply

GUPP ENTRY REQUIREMENTS:

SPM

Pass SPM with minimum Grade C in Bahasa Melayu, Mathematics, English, Additional Mathematics, Physics and Chemistry.

IGCSE/O-LEVEL

Pass IGCSE/O-Level with minimum Credits (Grade C) or 60% and above in 5 subjects inclusive of Mathematics, Physics, Chemistry, Additional Mathematics and any other 1 subject.

FEE STRUCTURE FOR GUPP (LOCAL STUDENTS)

	TYPE & FEE CATEGORIES	SEMESTER 1	SEMESTER 2	SEMESTER 3	TOTAL (MYR)
A	GUPP COURSE FEE	5,350	5,350	5,350	16,050
B	MISCELLANEOUS FEES				
	Deposit	500	-	-	1,000
	Orientation Fee	350	-	-	350
	Administrative Fee	150	-	-	150
	Registration Fee	100	100	100	300
	Service & Activity Fee	50	50	50	150
	Resource Fee	200	200	200	600
	TOTAL MISCELLANEOUS FEES	1,350	350	350	2,050
C	HOSTEL FEE (optional)	800	800	800	2,400
	GUPP COURSE FEE WITHOUT HOSTEL (A+B)	6,700	5,700	5,700	18,100
	GUPP COURSE FEE WITH HOSTEL (A+B+C)	7,500	6,500	6,500	20,500

**All fees are subject to change*

FEES STRUCTURE FOR GUPF (INTERNATIONAL STUDENTS)

TYPE & FEE CATEGORIES		SEMESTER 1	SEMESTER 2	SEMESTER 3	TOTAL (MYR)
A	GUPF COURSE FEE	8,025	8,025	8,025	24,075
B	MISCELLANEOUS FEES				
	Deposit	1,000	-	-	1,000
	Orientation Fee	350	-	-	350
	Administrative Fee	500	-	-	500
	Registration Fee	100	100	100	300
	Service & Activity Fee	50	50	50	150
	Resource Fee	200	200	200	600
	TOTAL MISCELLANEOUS FEES	2,200	350	350	2,900
C	HOSTEL FEE (optional)	800	800	800	2,400
	GUPF COURSE FEE WITHOUT HOSTEL (A+B)	10,225	8,375	8,375	26,975
	GUPF COURSE FEE WITH HOSTEL (A+B+C)	11,025	9,175	9,175	29,375

**All fees are subject to change*

Note:

1. All fees stated are in Malaysian Ringgit (MYR) unless otherwise stated
2. Application processing fee (RM 500) is payable upon submission of admission application
3. All payments to be made payable to the following banking particulars:
 Beneficiary :German-Malaysian Institute
 Bank :CIMB Bank
 Account No :800 2777 436
 Swift code: CIBB MY KL

Estimate Additional Expenses for International Student

Description	Total (MYR)	Remark
Visa & Insurance (per year)	3,210	(max) subject to countries
Personal Bond (required by Immigration Department of Malaysia)	2,000	
Advance payment for tuition fee (non-refundable)	2,700	

FINANCIAL ASSISTANCE



GMI FACILITIES



Auditorium



Main Hall



Hostel



Mini Mart



Sports Complex



Counselling Centre



Library



Gymnasium



ATM



Common Area



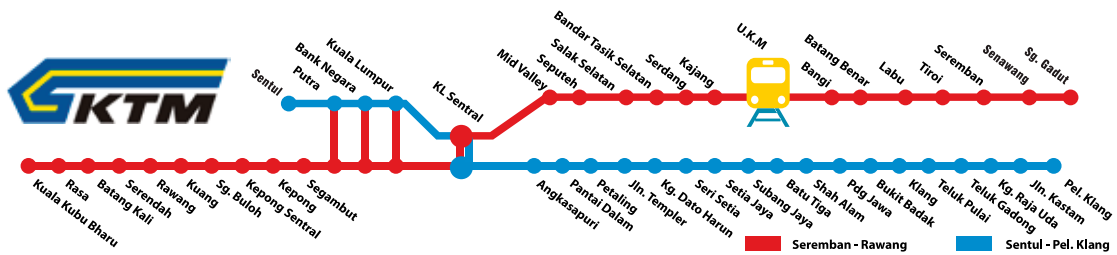
Surau



OUR LOCATION



Scan QR Code : GMI Location





GERMAN-MALAYSIAN INSTITUTE

199201016476 (247980-K)
DK040(B)



GMI Linktree

This is German-Malaysian Institute, It is All About Applied Science, The Rest is Technology

www.gmi.edu.my       a MARA subsidiary | a member of MGCC

Disclaimer: German-Malaysian Institute warrants that all contents included herein are accurate at the time of printing. The company reserve the right, at its sole discretion, to amend, modify, add, or remove any portion of information presented in this publication, in whole or in part, at any time without prior notice. Changes will be effective when notice of such change is made known to concerned parties.

Version May 2026